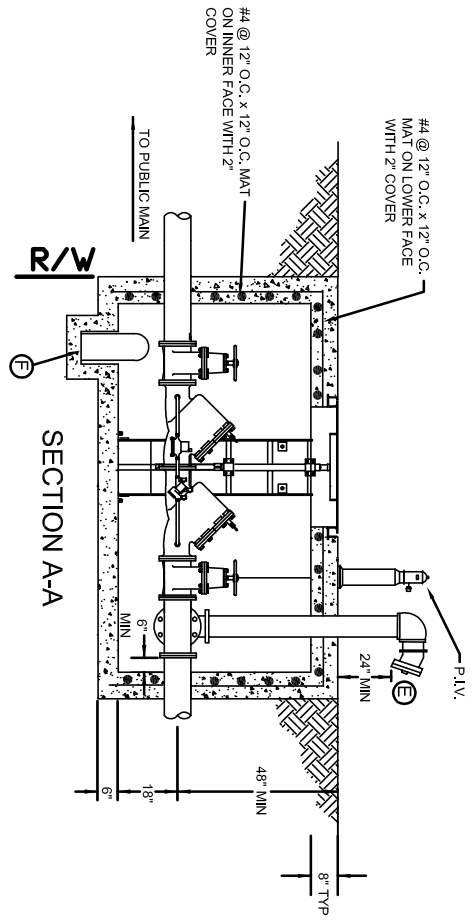


PLAN

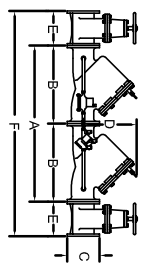


SECTION A-A

NOTE: SIDES SHALL BE DOWELED TO TOP AND BOTTOM WITH REINFORCING STEEL

- A) FIRE SERVICE BACKFLOW PREVENTION DEVICE: WATTS #709-DCDA, WATTS #774DCDA, AMES #3000 DCDA, OR EQUAL.
- B) BY-PASS METER (¾" OR 1" PURCHASED FROM BUTLER CO.). NOTE: BY-PASS LINE REQUIRES A BACKFLOW DEVICE SIMILAR TO THE WATTS #709.
- C) 1½" BILCO MODEL #4-4AL, OR HALLIDAY MODEL #W153836, OR APPROVED EQUAL.
- D) ALUMINUM LADDER: OSHA APPROVED HALLIDAY SERIES L-118 WITH SERIES L-11E SAFETY POST, OR APPROVED EQUAL.
- E) 5" LOCKING STORTIZ ON 30° ELBOW TURNED DOWN SECURED SIGN INDICATING "FIRE DEPT. CONNECTION" (FDC) WITH ADDRESS IF PROTECTS FIXED TO THE FDC FACING STREET.
- F) SUMP PUMP (REQUIRED IF GRAVITY DRAIN IS NOT POSSIBLE). EXTEND DISCHARGE PIPING AWAY FROM TOP OF VAULT.
- G) CHECK VALVE WITH AUTOMATIC BALL DRIP.
- H) CONTRACTOR/PLUMBER TO VERIFY LANDING LENGTH OF BACKFLOW DEVICE, VALVES, METERS ETC.

WATTS #709 DCDA



SIZE	A	B	C	D	E	F
3"	24	12	7.5	7	8	40
4"	34	17	9	9.5	9	52
6"	41.5	20.75	11	14.5	10.5	82.5
8"	52	26	13	18.5	11.5	75
10"	64	32	16	21.5	13	90

FIRE SERVICE SETTING
W/ BACKFLOW DEVICE



BUTLER COUNTY
WATER AND SEWER

130 HIGH STREET
HAMILTON, OH 45011
TELEPHONE: 513-887-3066
FAX: 513-887-3777