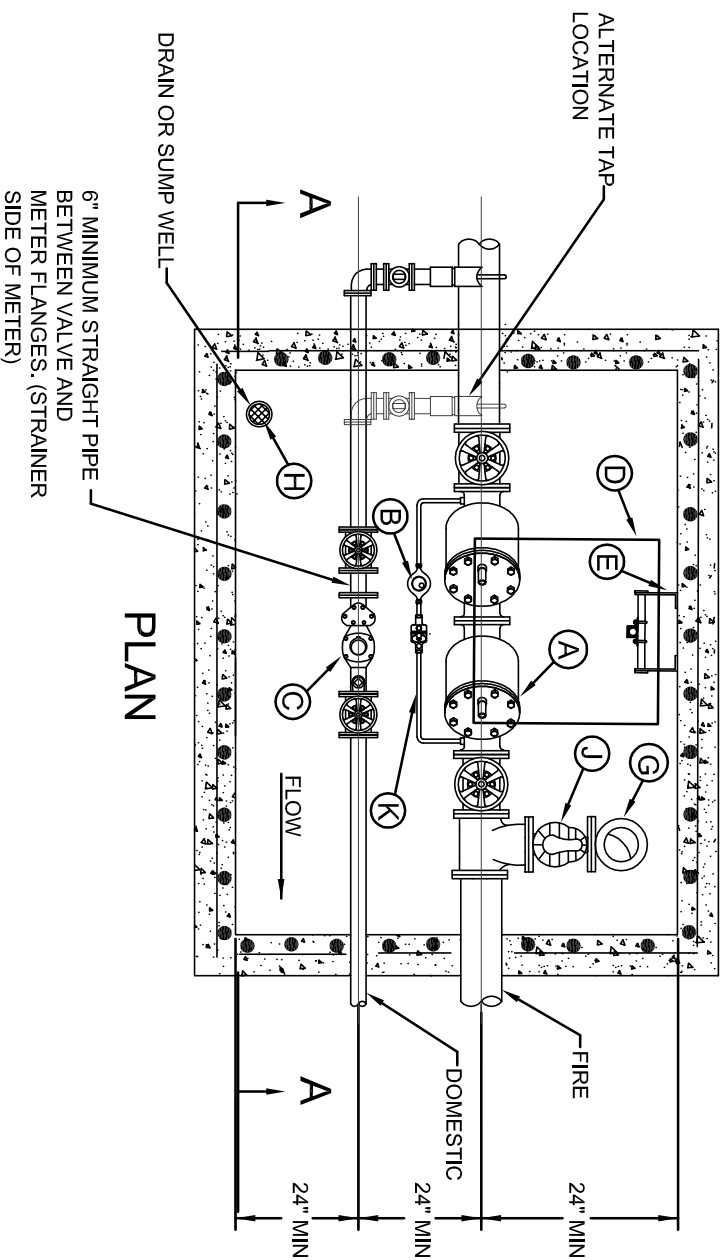


OMNI METER INSTALLATION INSTRUCTIONS

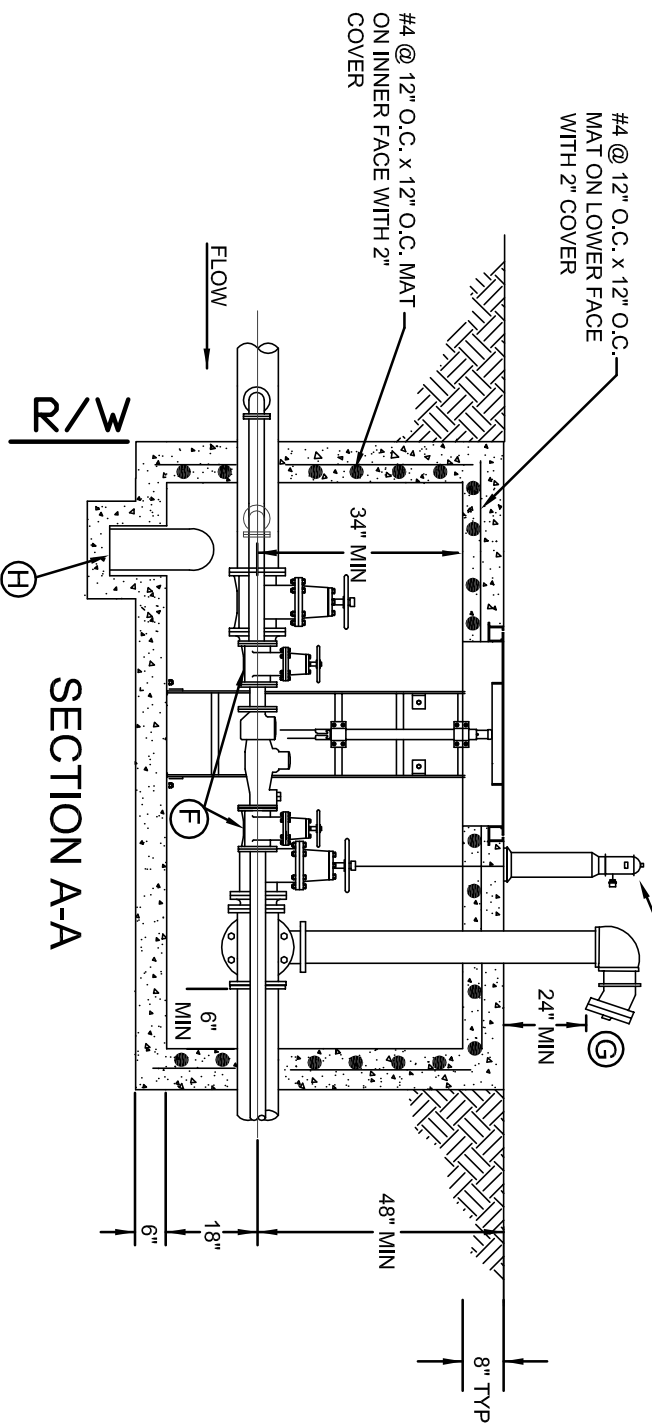
1. WHEN INSTALLING SENSUS OMNI METERS WITH THE STRAINER, A MINIMUM OF 2 1/2 PIPE DIAMETERS OF STRAIGHT RUN OF PIPE OR EQUIVALENT FULL OPEN COMPONENTS IS REQUIRED UPSTREAM AND DOWNSTREAM OF THE METER OR STRAINER FLANGES. FULL OPEN FLOW COMPONENTS MAY CONSIST OF: STRAIGHT PIPE, FULL OPEN GATE VALVES, BYPASS TEES AND CONCENTRIC REDUCERS (1 NOMINAL PIPE SIZE REDUCTION ONLY). FOR ALL OTHER INSTALLATION CONFIGURATIONS, A MINIMUM OF 5 PIPE DIAMETERS OF STRAIGHT RUN IS REQUIRED UPSTREAM.
2. GATE VALVES LOCATED IMMEDIATELY UPSTREAM OR DOWNSTREAM ARE ACCEPTABLE, PROVIDED THEY ARE FULLY OPEN DURING METER SERVICE AND ARE NOT USED TO THROTTLE FLOW RATES THROUGH THE METER.
3. INSTALL NONCONCENTRIC REDUCERS, CHECK VALVES, BACKFLOW PREVENTERS, PRV (PRESSURE REDUCING VALVES), THROTTLING DEVICES, ALTITUDE VALVES NO CLOSER THAN 4 PIPE DIAMETERS DOWNSTREAM OF THE METER. ALWAYS AVOID PLACING ANY OF THESE DEVICES UPSTREAM OF ANY METER SINCE THE PLACEMENT WILL PUT THE METER IN A LOW PRESSURE ZONE THUS POSSIBLY CAUSING INCONSISTENT ACCURACY AND REDUCED LONGEVITY.

NOTE: OMNI METERS CAN BE INSTALLED VERTICALLY OR ROTATED ON THE BOLT PATTERN IN ANY ORIENTATION.



METER SIZE & TYPE	MIN.
1 1/2" T2 OMNI	13"
1 1/2" C2 OMNI	13"
2" T2 OMNI	17"
2" C2 OMNI	15 1/4"
3" T2 OMNI	19"
3" C2 OMNI	17"
4" T2 OMNI	23"
4" C2 OMNI	20"
6" T2 OMNI	27"
6" C2 OMNI	24"

NOTE: SIDES SHALL BE DOWELED TO TOP AND BOTTOM WITH REINFORCING STEEL



SECTION A-A

- A) FIRE SERVICE BACKFLOW PREVENTION DEVICE: WATTS #709-DCDA, AMES #3000 DCDA, OR EQUAL.
- B) BY-PASS METER (3/4" OR 1" PURCHASED FROM BUTLER CO.). NOTE: BY-PASS LINE REQUIRES A BACKFLOW DEVICE SIMILAR TO THE WATTS #709.
- C) DOMESTIC METER FURNISHED BY BUTLER CO. NOTE: 3" AND LARGER METERS SHALL BE INSTALLED WITH FLANGED CLASS 53 DUCTILE IRON PIPE. 2" AND LESS SHALL BE "K" COPPER.
- D) LID: BILCO MODEL #J-4AL, OR HALLIDAY MODEL #W1S3636, OR APPROVED EQUAL.
- E) ALUMINUM LADDER: OSHA APPROVED HALLIDAY SERIES L-1B WITH SERIES L-1E SAFETY POST, OR APPROVED EQUAL.
- F) DOMESTIC INLET AND OUTLET CONNECTIONS SEE CHART ABOVE.
- G) 5" LOCKING STORTZ ON 30° ELBOW TURNED DOWN SECURED SIGN INDICATING "FIRE DEPT. CONNECTION" (FDC) WITH ADDRESS IT PROTECTS FIXED TO THE FDC FACING STREET.
- H) SUMP PUMP (REQUIRED IF GRAVITY DRAIN IS NOT POSSIBLE). EXTEND DISCHARGE PIPING AWAY FROM TOP OF VAULT.
- J) CHECK VALVE WITH AUTOMATIC BALL DRIP.
- K) CONTRACTOR/PLUMBER TO VERIFY LAYING LENGTH OF BACKFLOW DEVICE, VALVES, METERS ETC.

DUAL SERVICE SETTING
W/ BACKFLOW DEVICE



BUTLER COUNTY
WATER AND SEWER

130 HIGH STREET
HAMILTON, OH 45011
TELEPHONE: 513-887-3066
FAX: 513-887-3777